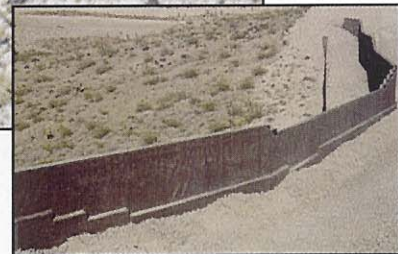


ECODRAIN-MS Drainage/Protection

MAKES SENSE AND SAVES CENTS



Economical and Effective Water Protection

- HDPE core provides a waterproofing barrier that is resistant to chemical and temperature effects.
- A highly durable protection course.
- Flexibility for easy detailing of corners without cracking and to handle movement.
- Variable widths provide minimal overlapping seams and cost effective installation.
- Provides a cost effective hydrostatic water pressure relief method.

PROPERTY	TEST METHOD	UNIT	ECODRAIN-MS
Core			HDPE
Color	N/A	NA	Brown
Compressive Strength	ASTM D 1621	lbs/ft2 (kN/m2)	5,200 (250)
Thickness	N/A	in.24
Dimple Depth	N/A	in.33

INSTALLATION TEMP F - 22° TO 175°

Negative Side Water Flow Rate @ 15% compressions gal/min/ft. width - 9.7

Packaging

Packaged in rolls of 3.5' x 65.5' (229 sq. ft.), 5' x 65.5' (327 sq. ft.), 6.6' x 65.5' (433 sq. ft.), 8' x 65.5' (524 sq. ft.), 9' x 65.5' (589 sq. ft.).

EPRO SERVICES, INC.
P.O. Box 347
Derby, KS 67037 USA



Phone: 800-882-1896
Fax: 316-262-2529
Web: www.eproserv.com

ECODRAIN-MS Specifications

1. PRODUCT NAME

ECODRAIN-MS

2. MANUFACTURER

EPRO SERVICES, INC.
P.O. Box 347
Derby, KS 67037
PHONE: 800-882-1896
FAX: 316-262-2529

3. PRODUCT DESCRIPTION

Basic Use:

ECODRAIN-MS has been specifically designed to meet the drainage and protection requirements in below-grade waterproofing applications. ECODRAIN-MS drainage composites effectively eliminate hydrostatic pressure against below-grade structures while protecting the waterproofing membrane.

Composition:

ECODRAIN-MS features a lightweight three-dimensional/high flow drainage core. The dimple inward installation allows water, if it penetrates the Ecodrain-MS, to pass freely down to the discharge system, eliminating hydrostatic water pressure against the waterproofing membrane and wall.

Benefits:

- High density polyethylene core provides: (1) resistance to chemical attack from soil, (2) secondary waterproofing barrier, (3) thermal resistance, and (4) flexibility for easy detailing of corners.

- Convex (rounded) dimple design reduces stress on protected waterproofing membrane or insulation board from back-fill pressure while eliminating hydrostatic water pressure.

- Variable widths (3.5', 5', 6.6' and 9') provide minimal overlapping seams and cost effective installation.

Limitations:

- Should not be exposed to long duration of UV.

- Should be used with dampproofing or waterproofing on CMU's.

4. TECHNICAL DATA

Properties: See chart
Coverage's: See chart.

Specification Writer:

Contact EPRO Services before writing specifications on this project. Test information available upon request.

5. INSTALLATION

Preparation: See specific application guide specifications.

Application: Should be applied in accordance with specific application guide specifications.

Tools: No special tools required for installation.

6. AVAILABILITY AND COST

Contact the local distributor and / or Authorized Applicator for availability and cost.

7. WARRANTY

Limited Warranty: EPRO warrants this product to be free from defects. EPRO makes no other warranties with respect to this product, express or implied, including without limitation the implied warranties of MERCHANTABILITY OR FITNESS FOR PARTICULAR PURPOSE. EPRO's liability shall be limited in all events to supplying sufficient product to retreat the specific areas to which defective product has been applied. EPRO shall have no other liability, including liability for incidental or resultant damages, whether due to breach of warranty or negligence. This warranty may not be modified or extended by representatives of EPRO or its distributors.

8. MAINTENANCE

No maintenance required.

9. TECHNICAL SERVICES AND INFORMATION

Complete technical services and information are available from EPRO Services.

