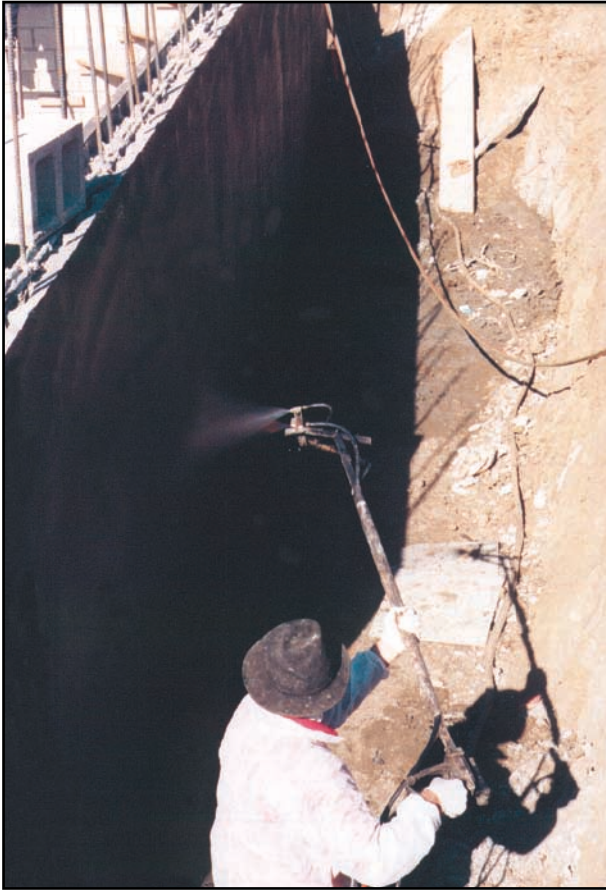


ECOLINE-S Spray Applied Membrane

Seamless Waterproofing For The Most Demanding Applications



The Answer To Seam and Adhesive Failures

- Water based ... may be applied to green or uncured concrete, damp surfaces, and lightweight forms.
- Excellent elongation and recovery ... can handle expansion and contraction as well as minor cracking.
- Exceptional bonding ... won't delaminate from surface, even with ponded water.
- Spray applied ... creates a seamless and resilient membrane.
- Instant build ... allows applications in inclement weather and eliminates shrinkage.

COVERAGES

Walls	40 mils (28 sq.ft./gal.)
Decks	55-60 mils (21 sq.ft./gal.)

TYPICAL UNCURED PROPERTIES

Specific Gravity, ASTM D 244	1.00
Viscosity, ASTM D 1200	>25 centipoise
PH	12.3
Flammability, ASTM D 3143	500°F
Color	Brown to Black
Non-Toxic	No Solvents
Shelf Life	6 months

Packaging

Available in bulk, 275 gal. totes, or 55 gal. drums

TYPICAL CURED PROPERTIES

Initial Cure	10 minutes
Final Cure	24-48 hours
Tensile Strength	52 PSI
Elongation	+1300 %
Resilience	98% (recovery)
Moisture Vapor Transmission07 gm/sq.ft./hr.
Perm Rating17
Bonding, ASTM D413	820.6 PSF
Methane Transmission Rate. ASTM D1434	0
<i>Resistance to Acids</i>	
Hydrochloric	13%
Acetic	30%
Sulfuric	13%
<i>Temperature Effect</i>	
Stable	248°F
Flexible	13° F

EPRO SERVICES
P.O. Box 347
Derby, KS 67037 USA



Phone: 800-882-1896
316-262-2513
Fax: 316-262-2529

ECOLINE-S Specifications

1. PRODUCT NAME

ECOLINE-S

2. MANUFACTURER

EPRO SERVICES
P.O. Box 347
Derby, KS 67037
PHONE: 800-882-1896
FAX: 316-794-3451

3. PRODUCT DESCRIPTION

Basic Use: ECOLINE-S is designed to be a water proof and vapor retardant membrane for a variety of surfaces including concrete (uncured), block, wood, and metal and for a variety of applications including decks, walls (both negative and positive side) and water retainment structures. ECOLINE-S is to be applied with the unique self contained ECO Sprayer to produce instantaneous, monolithic high-build (over 500 mil) membranes at accelerated rates. It may be used as a water-proofing adhesive for protection/insulation board or tile and as a base coat for other water-based products.

Composition: ECOLINE-S is a low-viscosity, water-based, anionic bituminous/asphalt emulsion modified with a blend of liquid synthetic polymerized rubbers and special additives, which is highly reactive and exhibits exceptional bonding, elongation, waterproofing and build characteristics.

Benefits:

- Performs as a vapor and water barrier.
- Non hazardous, non-toxic, and non-flammable (VOC compliant).
- Excellent elongation and recovery.
- Good tensile strength.
- Exceptional bonding.
- Not affected by ponded water.
- Instantaneous build.

Limitations:

- Should be applied to clean and dry surfaces.
- Adjacent areas and surfaces should be protected from contact with the product.
- Exposure to UV.
- Should be stored above 40°F.
- A test area should always be done to verify compatibility of substrate with product.
- Solvent-based products should not be applied over this product.

4. TECHNICAL DATA

Properties: See chart.

Coverages: See chart.

• Specification Writer:

Contact EPRO Services before writing specifications on this project. Test information available upon request.

5. INSTALLATION

Preparation: Must include but not limited to:

- All surfaces should be dry and free of loose materials, release oils and other contaminants. These should be removed prior to application by power washing or other suitable methods.
- Repairs: Any cracks, spall or metal protrusion areas should be repaired by trowel application of ECOLINE-T insuring penetration of materials in damaged or cracked area. Large cracks may also require a layer of fiberglass mesh or polyester mat being spanned over crack and ECOLINE-T applied over this to provide additional membrane strength.
- A test should always be done prior to application using the same cleaning preparation and application procedures to be used on the project.

Application:

- Should be applied in accordance with specific application specifications.
- ECOLINE-S is to be spray applied with catalyst water by appropriate equipment fitted with specific nozzles (the ECO Spray System) which forms a monolithic water protec-

tion coating. Spray application produces an approximate 20 mil build on each pass of spray gun.

Cleaning: Clean all tools with kerosene and/or equivalent.

6. AVAILABILITY AND COST:

Contact the local distributor and/or Authorized Applicator for availability and cost.

7. WARRANTY

Limited Warranty: EPRO warrants this product to be free from defects. EPRO makes no other warranties with respect to this product, express or implied, including without limitation the implied warranties of MERCHANTABILITY OR FITNESS FOR PARTICULAR PURPOSE. EPRO's liability shall be limited in all events to supplying sufficient product to retreat the specific areas to which defective product has been applied. EPRO shall have no other liability, including liability for incidental or resultant damages, whether due to breach of warranty or negligence. This warranty may not be modified or extended by representatives of EPRO or its distributors.

8. MAINTENANCE:

No maintenance required.

9. TECHNICAL SERVICES AND INFORMATION:

Complete technical services and information are available from EPRO Services.



Rev. ELS.06.04.98

