



# ENVIROSEAL® DOUBLE 7 H.D.

Water-based silane/siloxane water-repellent sealer for porous substrates



## Where to Use Enviroseal® Double 7 H.D.

- Block
  - Concrete block - regular, heavy
  - Integrally colored - regular, heavy
- Porous vertical surfaces
- Interior or exterior

## Advantages

- Water based, VOC Compliant
- Excellent water bead
- Breathable
- Does not significantly alter surface appearance
- Easy to apply
- Environmentally friendly

## How to Apply Enviroseal® Double 7 H.D.

### Surface Preparation

- 1 Surfaces should be clean and dry, and free of alkali, efflorescence, sand, surface dust/dirt, oil, grease, chemical films and other contaminants. Concrete surfaces should be fully cured.
- 2 Air, material and surface temperatures should be 40°F (4°C) or higher during application and cure. Surfaces can be slightly damp prior to application, but for best results and maximum penetration of sealer, a dry surface is recommended. Do not apply sealer when temperatures are expected to fall below 40°F (4°C) within 4 hours of completed application.
- 3 Repoint any loose or disintegrated mortar and allow a minimum of 72 hours drying time before application. Caulking and sealant work must be completed prior to application, allowing a minimum of 6 - 12 hours curing time (or until set). Contact Technical Service for recommendations.

### Application

Test small area of surface (generally a 5' x 5' [1.5 m x 1.5 m] section) before starting general application of any clear, penetrating sealer to ensure desired results and coverage rates. Allow 2 - 4 weeks for the product to fully react before evaluating. See Tech Note: Test Area Application.

- 1 Mix product thoroughly prior to and during use.
- 2 Apply a mist coat of Enviroseal® Double 7 HD immediately prior to application to help break surface tension and assist with maximum penetration. Flood surfaces by applying from the bottom up, applied to saturation, with a controlled 8 - 10" (20 cm) material rundown to ensure maximum penetration into substrate. Low-pressure, non-atomizing spray is recommended.

### Dry Time

Typical drying time for Enviroseal® Double 7 H.D. is 4 hours at 70°F (21°C) and 50% relative humidity. Cooler temperatures or higher relative humidity can extend the drying time.

### Clean Up

Clean equipment and tools with hot soapy water. Overspray can be cleaned immediately with hot soapy water. Dried residue can be cleaned with a mild citric acid or very hot water, then scrubbed with a plastic sponge.

### For Best Performance

- Keep material from freezing.
- Do not dilute Enviroseal® Double 7 H.D.
- Variations in the texture and porosity of the substrate will affect the coverage, appearance and performance of the product.
- Do not apply during inclement weather or when inclement weather is anticipated within 12 hours.
- Enviroseal® Double 7 H.D. will not inhibit water penetration through unsound or cracked surfaces, or surfaces with defective flashing, caulking, or structural waterproofing.
- To prevent damage to nearby shrubbery and landscaping, cover or protect with drop cloth.
- Make certain the most current version of this data guide is being used; call Customer Service (1-800-433-9517) to verify the most current version .
- Proper application is the responsibility of the user. Field visits by ChemRex® personnel are for the purpose of making technical recommendations only and are not for supervising or providing quality control on the jobsite.

## Technical Data

Physical property	Result
Composition	Proprietary aqueous blend of silane and siloxane
Total active ingredients by weight	Approximately 18%
Density	8.34 lbs./gal.
Specific gravity	1.0 g/cc
Flash point (ASTM D 3278)	Greater than 212°F (100°C)
Penetration	1/16" - 3/8" (1.6 mm - 9.5 mm) depending upon substrate
Water repellency tests (ASTM C-140)	98.5% reduction in water absorption
Water permeance test of masonry (ASTM E 514 modified)	Percentage reduction of leakage on block wall 98.9% (minimum)
Yellowing	None
Efflorescence	Highly resistant
Drying time for recoat (if necessary)	30 minutes
Surface appearance after application	Unchanged to slight darkening

Test results are averages obtained under laboratory conditions. Reasonable variations can be expected.

## Order Information

### Packaging

Enviroseal® Double 7 H.D.

- 5 gallon (19 L) container
- 54 gallon (205 L) container

### Shelf Life

- Shelf life is one year if stored in original, unopened containers under normal conditions. Store material between 35°F and 110°F (2°C and 43°C).

### Coverage

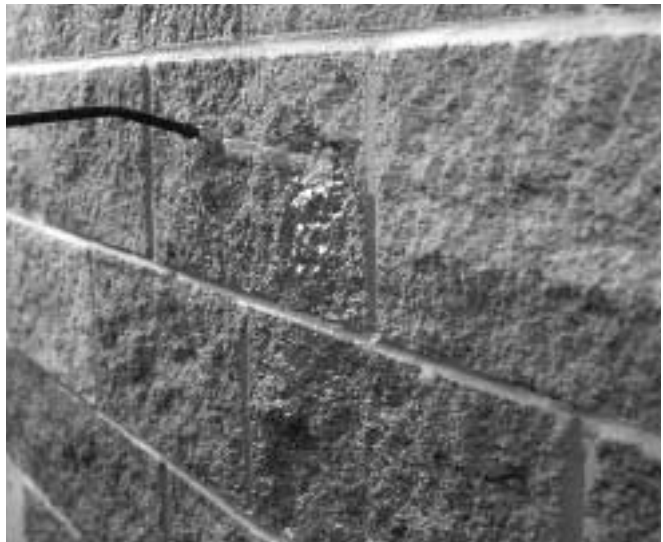
Block (regular and heavy)

- 60 - 100 square feet per gallon (1.5 - 2.4 m<sup>2</sup>/L)

Porous concrete

- 60 - 150 square feet per gallon (1.5 - 3.7 m<sup>2</sup>/L)

A test area is recommended to determine actual coverage rates. See Tech Note: Test Area Application. Coverage rates will vary greatly with the porosity of the substrate. On extremely porous substrates, two coats may be necessary; application of second coat should proceed with a wet-on-wet application. See Technote: Sealing Lightweight Block.



## Caution

Enviroseal® Double 7 H.D. contains octyltriethoxysilane, dimethyl methyl hydrogen siloxane, polyethylene oxide lauryl ether

## Risks

May cause skin, eye or respiratory irritation. Ingestion may cause irritation.

## Precautions

KEEP OUT OF THE REACH OF CHILDREN. Avoid contact with eyes, skin and clothing. Wash thoroughly after handling. Keep container closed when not in use. DO NOT take internally. Use only with adequate ventilation. Use impervious gloves, eye protection and if the TLV is exceeded or used in a poorly ventilated area, use NIOSH/MSHA approved respiratory protection in accordance with applicable federal, state and local regulations.

## First Aid

In case of eye contact, flush thoroughly with water for at least 15 minutes. In case of skin contact, wash affected areas with soap and water. If irritation persists, SEEK MEDICAL ATTENTION. Remove and wash contaminated clothing. If inhalation causes physical discomfort, remove to fresh air. If discomfort persists or any breathing difficulty occurs or if swallowed, SEEK IMMEDIATE MEDICAL ATTENTION.

For more information see Material Safety Data Sheet (MSDS) for this product.

## Proposition 65

This product contains material listed by the state of California as known to cause cancer, birth defects or other reproductive harm.

## VOC Content

282 g/L or 2.35 lbs./gal. less water and exempt solvents.

*For medical emergencies only, call ChemTrec (1/800/424-9300).*

---

### Limited Warranty Notice

Every reasonable effort is made to apply ChemRex® exacting standards both in the manufacture of our products and in the information which we issue concerning these products and their use. We warrant our products to be of good quality and will replace or, at our election, refund the purchase price of any products proved defective. Satisfactory results depend not only upon quality products, but also upon many factors beyond our control. Therefore, except for such replacement or refund, CHEMREX® MAKES NO WARRANTY OR GUARANTEE, EXPRESS OR IMPLIED, INCLUDING WARRANTIES OF FITNESS FOR A PARTICULAR PURPOSE OR MERCHANTABILITY, RESPECTING ITS PRODUCTS, and CHEMREX® shall have no other liability with respect thereto. Any claim regarding product defect must be received in writing within one (1) year from the date of shipment. No claim will be considered without such written notice or after the specified time interval. User shall determine the suitability of the products for the intended use and assume all risks and liability in connection therewith. Any authorized change in the printed recommendations concerning the use of our products must bear the signature of the ChemRex® Technical Manager.



**ChemRex®**

Corporate Office:

889 Valley Park Drive; Shakopee, MN 55379

Customer Service: 1/800/433-9517

Technical Services: 1/800/ChemRex (1/800/243-6739)

Web Site: [www.chemrex.com](http://www.chemrex.com)