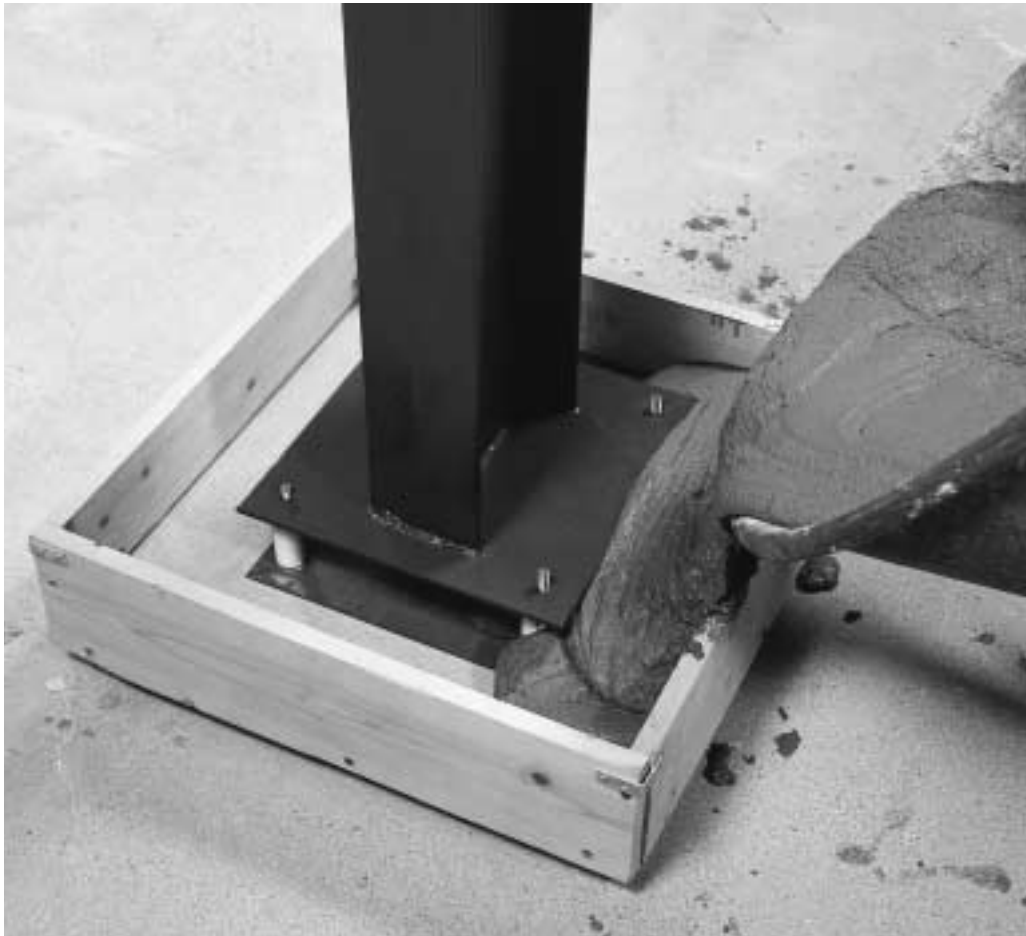


**Sonneborn®****Concrete  
Repair  
Systems****SONOCRETE®****SONOGROUT® 10K****Cementitious shrinkage-compensated  
nonmetallic high-strength grout**

- An economical general-purpose construction grout conforming to Corps of Engineers CRD-C-621-83 and ASTM C 1107

**Where to Use  
SonogROUT® 10K**

- Structural columns
- Machinery bases
- Bearing plates
- Pump and equipment bases
- Rail posts
- Seating bolts
- Power-line stanchions
- Food and chemical plants
- General new construction
- Restoration
- Interior or exterior

**Features**

- One component...
- Dry pack to pourable consistency...
- Contains no added chlorides, iron, or gypsum...
- Dimensionally stable...
- Freeze-thaw cycling stable...
- Will not produce efflorescence...

**Benefits**

- Mix with water only
- Ease of placement
- Will not rust, bleed, or harm metals on contact
- Needs no special treatment at edges, opened ends, cappings, or cut backs
- Durable
- Material will maintain a clean appearance; may be painted or coated

## How to Apply SonogROUT® 10K

### Surface Preparation

- 1 All areas to be grouted must be clean and free of oil, grease, dirt, and contaminants. Remove all loose materials. Concrete must be fully cured a minimum of 28 days.
- 2 Where required, provide air-relief openings to avoid entrapment of air.
- 3 All metal components to be in contact with SonogROUT® 10K must be free of rust, paint or oils. For additional protection, coat reinforcing steel with Sonoprep™ (See Form No. 1017986).
- 4 All concrete to come into contact with the grout must be thoroughly saturated with clean water for a minimum of 12 hours before placement of grout. Remove excess water from holes and voids just before grout placement.

### Mixing

SonogROUT® 10K is ready to use and requires only the addition of water. Use the minimum water required to achieve the desired placement consistency. Mix no longer than 5 minutes and place immediately.

### Application

- 1 For column base plates and machinery bases, follow forming procedures that allow for rapid and continuous placement of the grout and complete filling of the space to be grouted.
- 2 Support elements should be anchored so that no movement is possible. Remove supports only after SonogROUT® 10K has hardened sufficiently.
- 3 SonogROUT® 10K should be placed in accordance with standard grouting procedures and recommendations of the ACI for placing and curing of concrete.

- 4 Use chains, rods, or tamping devices to compact grout tightly, completely removing all air voids. Place grout quickly and continuously, striking off exposed areas. The minimum placement depth is 1/2" (13 mm).
- 5 For grouting beyond 2" (51 mm) in depth, SonogROUT® 10K must be extended with up to 50 lbs. (22.7 kg) of properly sized, washed, saturated surface dry, graded, low-absorption, high-density aggregate. Use ACI concrete guidelines for proper practices regarding aggregate extension.
- 6 Water addition and temperatures will determine set time. From dry pack to flowable, set time will vary from approximately 3 to 8 hours. Lower temperatures will lengthen and higher temperatures will shorten the working and setting times.

### Curing

Curing of the installed SonogROUT® 10K is mandatory. Either moist cure for at least 3 days or use any ASTM C 309-compliant Sonneborn® curing compound on the exposed surfaces. Take extra care to retain moisture on installations in direct sunlight, high temperatures, and wind.

### Clean Up

Clean all tools and equipment with water immediately. Cured material can be removed by mechanical means only.

---

## For Best Performance

- Temperature should be as close to 70°F (21°C) as possible.
- Wood surfaces that can absorb moisture should be pre-treated with forming oils.
- Edges of concrete to be grouted that are less than 1" (25 mm) thick must be cut back to form a square-cut edge.
- For improved bond to existing concrete, use either EpoGrip™ or Sonoprep™ (see Form No. 1017922 or 1017986).
- Handle like concrete regarding protection against temperatures and weather; do not exceed limitations set by the American Concrete Institute on placement of concrete.
- Exceeding published water requirements will decrease performance.
- Exposed finished grout must be cured; use sheeting, water, or any Sonneborn® curing compound.
- Do not add any cement or any other additives to SonogROUT® 10K.
- Do not retemper grout after initial mixing.
- When grouting particularly heavy equipment or when anticipating excessive vibration, consider the use of Sonneborn® 14K Hy Flow (see Form No. 1017942).
- Additional information on grouts and trade practices can be found in "Cementitious Grouts and Grouting," published by the Portland Cement Association.
- Make certain the most current version of this data guide is being used; call Customer Service (1-800-433-9517) to verify the most current version.
- Proper application is the responsibility of the user. Field visits by ChemRex® personnel are for the purpose of making technical recommendations only and are not for supervising or providing quality control on the jobsite.

## Technical Data

### Compliances

- Corps of Engineers  
CRD-C-621-83.
- ASTM C 1107, Grade A
- City of Los Angeles  
Research Report  
#RR25187T

Compressive Strength, psi (MPa)				
			Minimum Flow	Moderate Flow
	Dry Pack	Very Stiff Paste	(soft to plastic)	(plastic to pourable)
1 day			2,900 (20.0)	1,600 (11.0)
3 days			6,500 (44.8)	3,800 (26.2)
7 days			7,200 (49.6)	5,100 (35.2)
28 days	11,500	10,000	9,200 (63.4)	6,200 (42.7)

Dry pack mixed at 2 qts. per 50 lb. bag (83.5 g/kg powder); very stiff paste mixed at 2-1/4 qts. per 50 lb. bag (94.0 g/kg powder); minimum flow tested at 2-1/3 quarts water per 50 lb. bag (100 g/kg powder); moderate flow tested at 3-1/8 quarts water per 50 lb. bag (132 g/kg powder).

Volume Change (%)	
1 day	+0.32
3 days	+0.32
7 days	+0.34
14 days	+0.34
28 days	+0.35

Test results are averages obtained under laboratory conditions. Reasonable variations can be expected.

---

## Order Information

### Packaging

- SonogROUT® 10K
- 50 lb. (22.7 kg) bags

Shelf life is typically 9 months when stored in unopened bags under normal conditions.

### Color

- Concrete gray

### Coverage

- When mixed with water, a 50 lb. (22.7 kg) bag will yield approximately 0.40 cubic feet (0.011 cubic meters).

## Caution

SonogROUT® 10K contains Portland cement, silicon dioxide (quartz)

## Risks

Product is alkaline on contact with water and may cause injury to skin or eyes. Ingestion or inhalation of dust may cause irritation. Contains small amount of free respirable quartz which has been listed as a suspected human carcinogen by NTP and IARC. Repeated or prolonged overexposure to free respirable quartz may cause silicosis or other serious and delayed lung injury.

## Precautions

KEEP OUT OF THE REACH OF CHILDREN. Prevent contact with skin and eyes. Prevent inhalation of dust. DO NOT take internally. Use only with adequate ventilation. Use impervious gloves, eye protection and if the TLV is exceeded or is used in a poorly ventilated area, use NIOSH/MSHA approved respiratory protection in accordance with applicable federal, state and local regulations.

## First Aid

In case of eye contact, flush thoroughly with water for at least 15 minutes. SEEK IMMEDIATE MEDICAL ATTENTION. In case of skin contact, wash affected areas with soap and water. If irritation persists, SEEK MEDICAL ATTENTION. Remove and wash contaminated clothing. If inhalation causes physical discomfort, remove to fresh air. If discomfort persists or any breathing difficulty occurs, SEEK IMMEDIATE MEDICAL ATTENTION. If swallowed, SEEK IMMEDIATE MEDICAL ATTENTION.

Refer to Material Safety Data Sheet (MSDS) for further information.

## Proposition 65

This product contains materials listed by the state of California as known to cause cancer, birth defects or other reproductive harm.

## VOC Content

0 g/L or 0 lbs./gallon less water and exempt solvents.

**For medical emergencies only, call ChemTrec 1/800/424/9300.**

### Limited Warranty Notice

Every reasonable effort is made to apply ChemRex® exacting standards both in the manufacture of our products and in the information which we issue concerning these products and their use. We warrant our products to be of good quality and will replace or, at our election, refund the purchase price of any products proved defective. Satisfactory results depend not only upon quality products, but also upon many factors beyond our control. Therefore, except for such replacement or refund, CHEMREX® MAKES NO WARRANTY OR GUARANTEE, EXPRESS OR IMPLIED, INCLUDING WARRANTIES OF FITNESS FOR A PARTICULAR PURPOSE OR MERCHANTABILITY, RESPECTING ITS PRODUCTS, and CHEMREX® shall have no other liability with respect thereto. Any claim regarding product defect must be received in writing within one (1) year from the date of shipment. No claim will be considered without such written notice or after the specified time interval. User shall determine the suitability of the products for the intended use and assume all risks and liability in connection therewith. Any authorized change in the printed recommendations concerning the use of our products must bear the signature of the ChemRex® Technical Manager.



**Sonneborn®**

**ChemRex®**

Corporate Office:

889 Valley Park Drive; Shakopee, MN 55379

Customer Service: 1/800/433-9517

Technical Services: 1/800/ChemRex (1/800/243-6739)

Web Site: [www.chemrex.com](http://www.chemrex.com)