

# TREMCO®

# Superstop

## Resealable Bentonite Waterstop Material

# S

### Product Description:

A multiple composite waterstop which combines the strength and toughness of conventional waterstop with the self-sealing ability of bentonite.

### Basic Uses:

Superstop is used to seal cold joints in concrete to create water dams under roofing membranes, to create water dams under floor membranes and to prevent water migration in joints. It will function at water depths in excess of one hundred feet (30.5m). When installed as directed, Superstop will absolutely stop the passage of water through a static cold joint or between any two impermeable surfaces.

### Limitations:

- Do not apply in standing water or over snow.
- Whenever acid, alkali or salt brine exist, consult Tremco.

### Packaging:

1" x 1/2" x 20' (2.5cm x 1.3cm x 6.1m) and 1" x 3/4" x 13' (2.5cm x 1.9cm x 4m) rolls. Packaged 200 lineal feet (61m) per box (1/2"width) (1.3cm) and 130 lineal feet (39.6m) per box (3/4"width) (1.8cm).

### Installation:

Joint surface where the Superstop is to be installed should be troweled smooth. Remove all debris and sweep the surface prior to installation. Paraprimer should be applied to clean surface prior to adhering Superstop especially on vertical joints.

Remove release paper exposing adhesive. Butt ends together, nail 12" (30cm) o.c.

### Storage:

Protect from moisture, store in dry area.

### Availability:

Immediately available from your local Tremco Field Representative, Tremco Distributor or Tremco Warehouse.

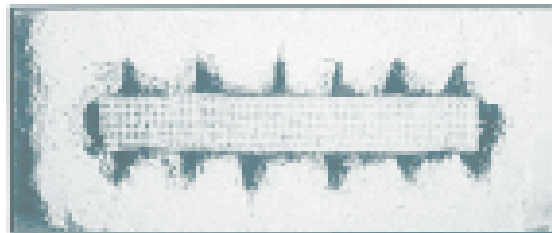
### Warranty:

Tremco warrants its Products to be free of defects in materials, but makes no warranty as to appearance or color. Since methods of application and on site conditions are beyond our control and can affect performance, Tremco makes no other warranty, expressed or implied, including warranties of MERCHANTABILITY and FITNESS FOR A PARTICULAR PURPOSE, with respect to Tremco Products. Tremco's sole obligation shall be, at its option, to replace, or refund the purchase of the quantity of Tremco Products proven to be defective and Tremco shall not be liable for any loss or damage.

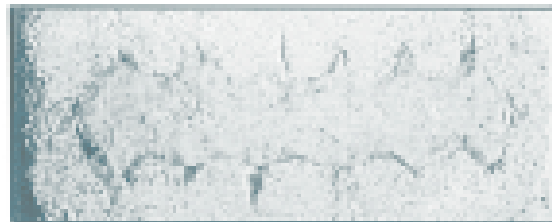


## TYPICAL PHYSICAL PROPERTIES

Physical Property	Value	Test Method
Specific Gravity at 77°F (25°C)	1.75	ASTM D71
Softening Point	212°F (100°C)	ASTM D30
Flash Point	None	ASTM D-93-97
Application Temperature Range	0°F (-17.8°C) to 120°F (110°C)	
Service Temperature Range	-40°F (-40°C) to 230°F (110°C)	
Color	Gray/Black	
Tear Strength	70 lbs. (31.7 kgs)	
% Elongation-Ultimate Failure	50%	ASTM D-638 Type 4
Water Flow through a concrete joint with 100' (30m) waterhead	No Flow	ASTM D751 Method A



Dry Superstop in Concrete



Superstop after 3 days of wetting

For MSDS and Spec Data Sheets,  
Call our 24 Hour Fax-Back Line:

1-800-551-2806

or visit our website:

[www.tremcosealants.com](http://www.tremcosealants.com)

**TREMCO**

Sealant/Weatherproofing Division

3735 Green Road • Beachwood, Ohio • 44122 • Phone: (216) 292-5000 • (800) 321-7906  
220 Wicksteed Avenue • Toronto, ON M4H 1G7 • Phone: (416) 421-3300 • (800) 363-3213